

UP TO **92% AFUE PERFORMANCE**

Goodman[®]

Air Conditioning & Heating

GCSS92

HIGH-EFFICIENCY, MULTI-SPEED
SINGLE-STAGE GAS FURNACE



Thank goodness for Goodman[®].



Air Conditioning & Heating

PRECISE COMFORT AND VALUE

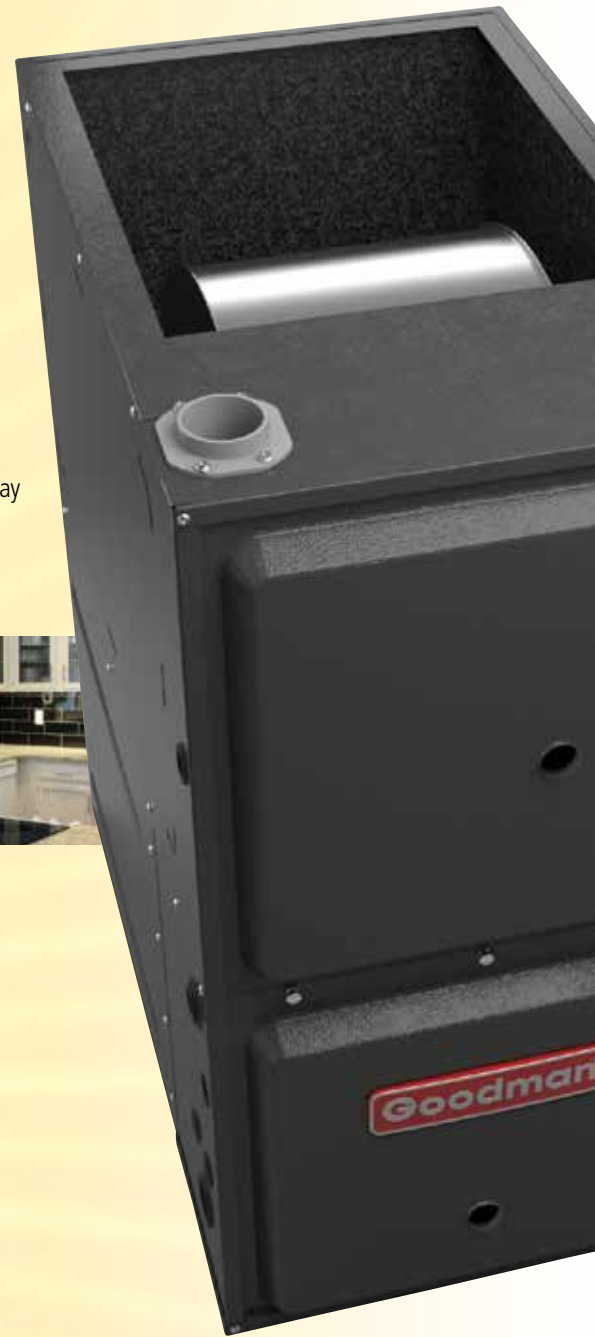
When selecting a gas furnace for your home, you are often searching to find the best combination for an ideal level of home comfort. You want to find a gas furnace that offers exceptional, dependable, and stable performance for many, many years. Most importantly, you want the best value possible. Faced with the decision to find a trustworthy and reliable gas furnace that delivers quiet, energy-saving operation and outstanding long-term value, the Goodman® brand GCSS92 Single-Stage Gas Furnace may be your best option. Whether it's the coldest day of the year or any day of the year, with the Goodman GCSS92 Gas Furnace you'll be saying, **"Thank goodness for Goodman."**



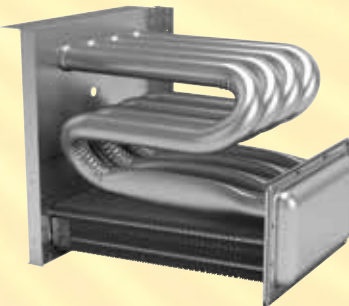
ENJOY THE COMFORT AND EFFICIENCY

The Goodman brand GCSS92 High-Efficiency Gas Furnace with single-stage gas valve and a multi-speed circulating blower provides efficient and economical performance.

Energy efficiency is key to controlling the cost of heating your home. The 92% AFUE rating on this gas furnace means that 92 cents of every \$1.00 of heating energy expense warms your home. Some older central heating systems are rated at 60% AFUE. The Department of Energy (DOE) established the AFUE (Annual Fuel Utilization Efficiency) system to calculate the annual operating cost of residential gas furnaces.



THE HEART OF COMFORT



The award-winning design of the primary heat exchanger in the Goodman brand GCSS92 Single-Stage Gas Furnace is unique. It's constructed from tubular aluminized-steel. The use of wrinkle-bend technology results in an extremely durable heat exchanger. A heat exchanger often is considered the essential component of any gas furnace. Additionally, this gas furnace has a stainless-steel secondary heat exchanger. This combination offers one of the best levels of reliability, durability, and efficiency you'll find within the Goodman brand.

IMPRESSIVE FEATURES AND BENEFITS:

GOODMAN® BRAND GCSS92

MULTI-SPEED SINGLE-STAGE GAS FURNACE

- Heavy-duty aluminized-steel tubular heat exchanger
- Stainless-steel secondary heat exchanger
- Single-stage gas valve provides quiet, economical heating
- Durable silicon nitride igniter
- Heavy gauge steel cabinet with durable finish
- Multi-speed blower motor
- Quiet single-speed induced draft blower
- Self-diagnostic control board output to a LED display
- Foil-faced insulated heat exchanger section supports added energy-efficient operation

Talk to your Goodman brand dealer about opportunities to optimize the efficiency of your new unit.

OUTSTANDING LIMITED WARRANTY* PROTECTION



* Complete warranty details available from your local dealer or at www.goodmanmfg.com. To receive the Lifetime Heat Exchanger Limited Warranty (good for as long as you own your home) and 10-Year Parts Limited Warranty, online registration must be completed within 60 days of installation. Online registration is not required in California or Quebec.

ADDITIONAL INFORMATION

Before purchasing this appliance, read important information about its estimated annual energy consumption, yearly operating cost, or energy efficiency rating that is available from your retailer.



Thank goodness for Goodman.®



Why are homeowners talking about Goodman?



The reviews are in!

Each day more and more homeowners say, 'Thank goodness for Goodman®'. Find out why by visiting www.goodmanmfg.com/reviews.



GOODMAN – A MEMBER OF DAIKIN GROUP

Daikin Industries, Ltd. (DIL) is a global Fortune 1000 company with more than 50,000 employees worldwide, making it the number one residential and commercial HVAC manufacturer in the world. DIL is engaged primarily in the development, manufacture, sale and aftermarket support of heating, ventilation, air conditioning and refrigeration equipment, refrigerants and other chemicals, as well as oil hydraulic products. DIL is headquartered in Osaka, Japan, has manufacturing operations in 18 countries and a sales presence in more than 90 countries.

The company provides innovative, premium quality indoor climate management solutions to meet the changing needs of residential, commercial and industrial customers.



CB-GCSS92 06-15

Our continuing commitment to quality products may mean a change in specifications without notice.
© 2015 Goodman Manufacturing Company, L.P. · Houston, Texas · USA

www.goodmanmfg.com